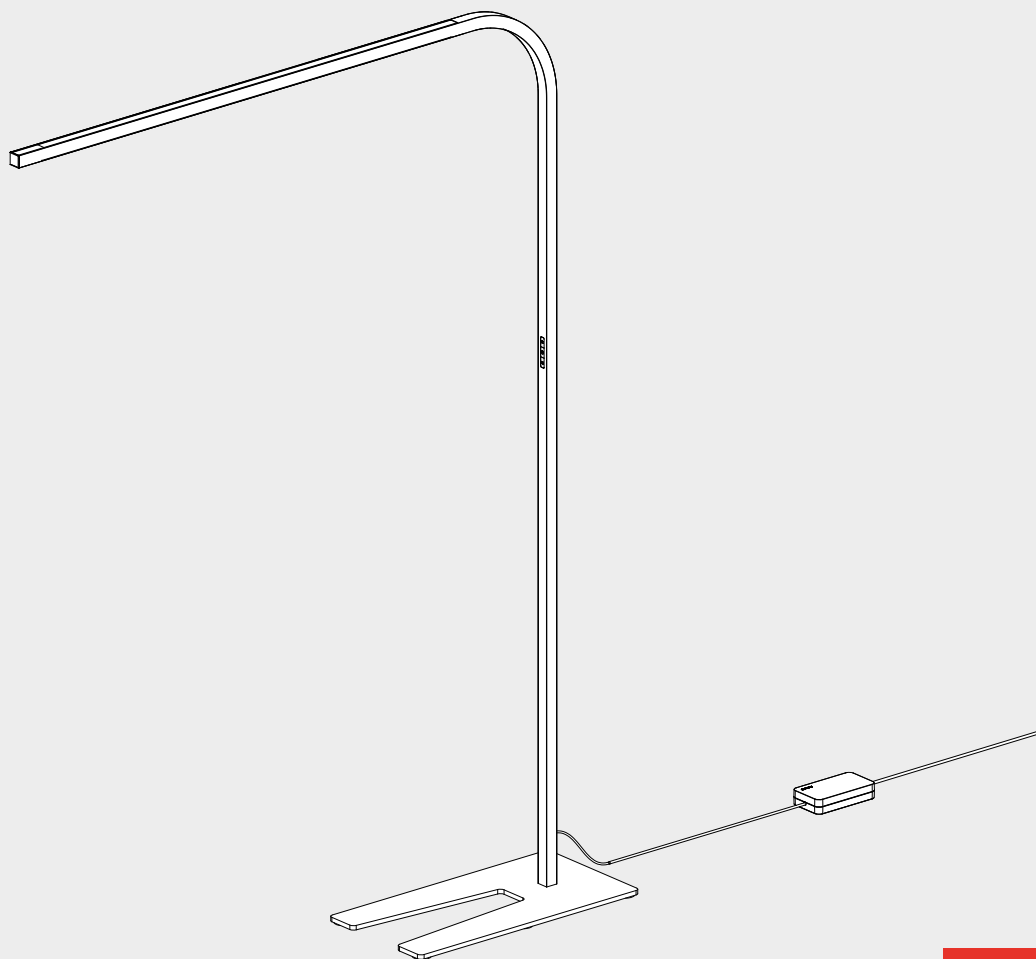


Artemide®

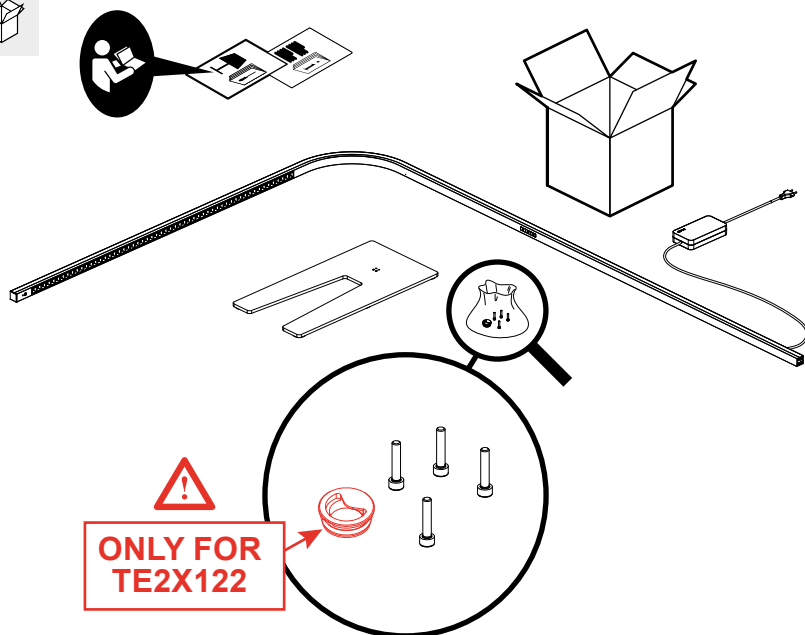
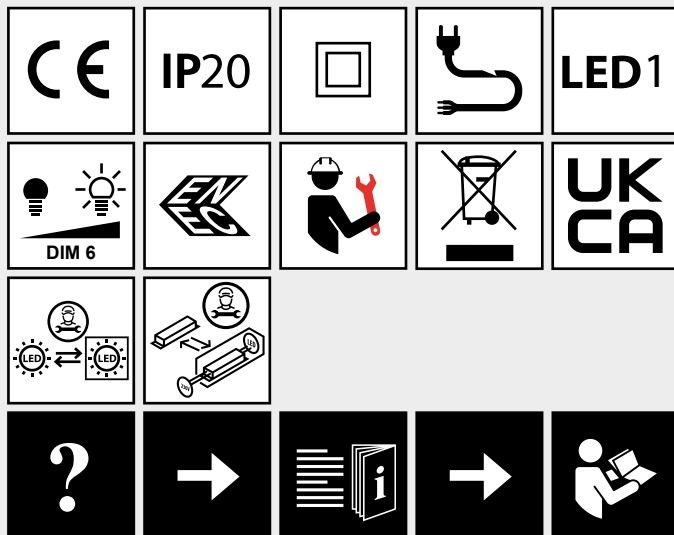
TURN AROUND

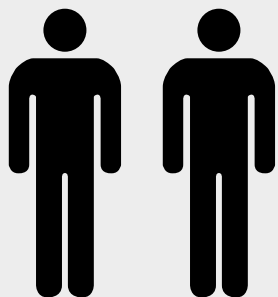
design
Carlotta de Bevilacqua



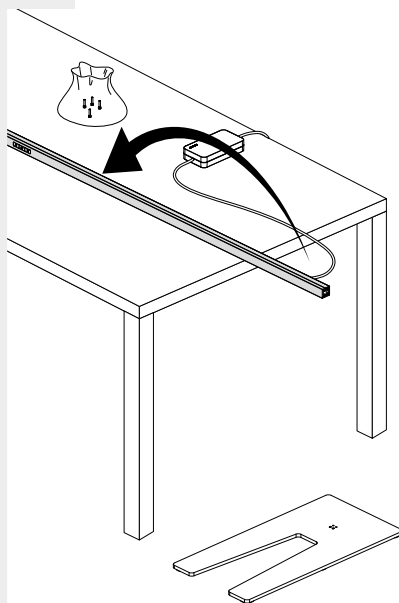


i

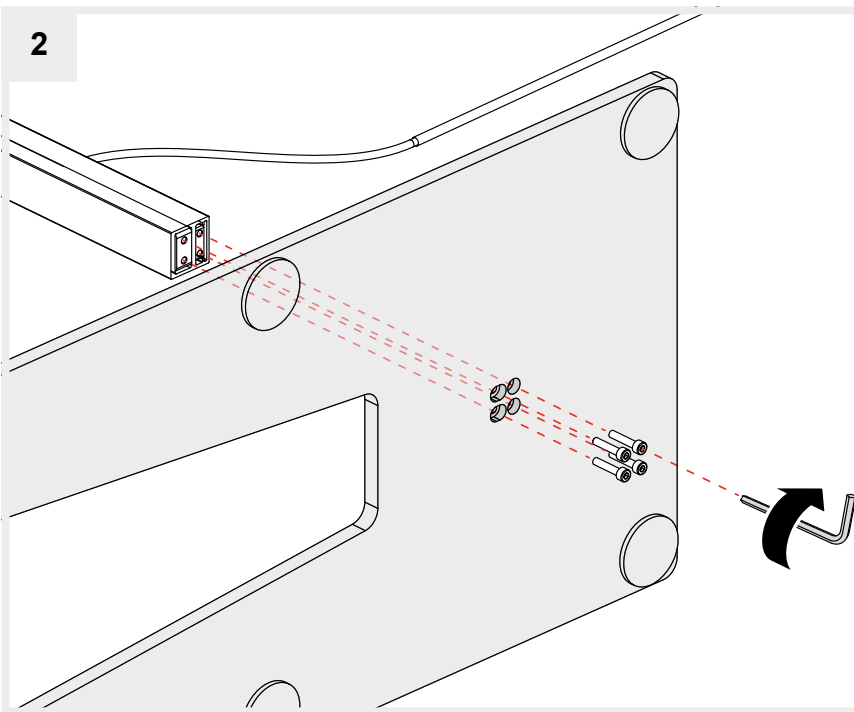


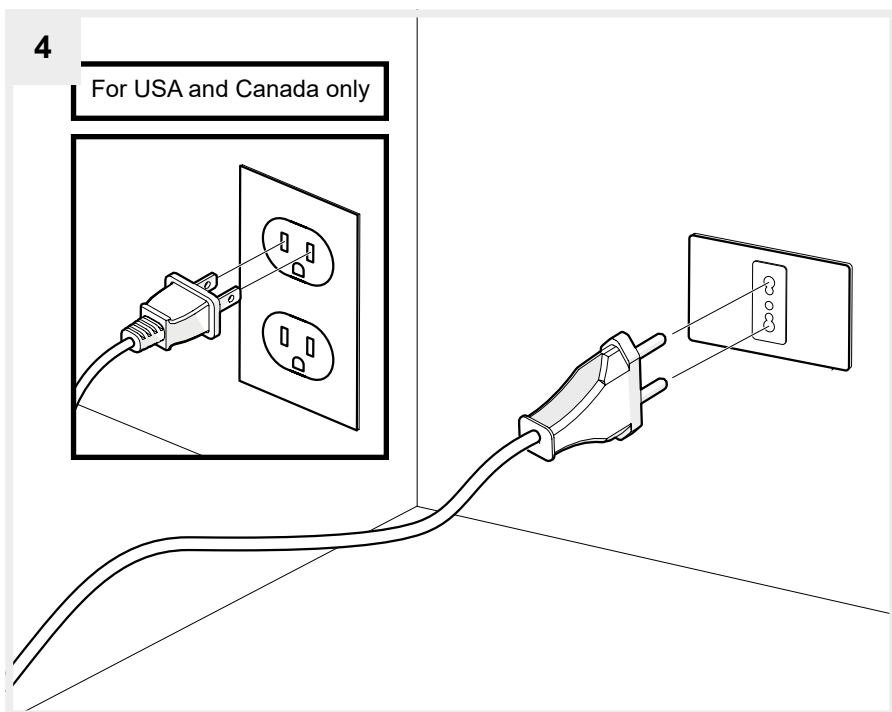
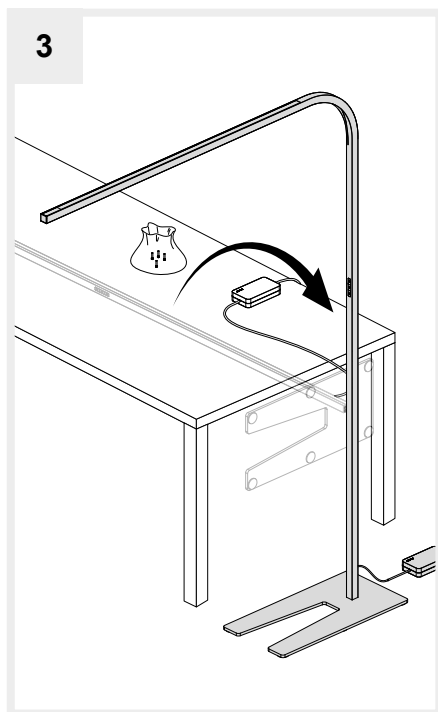
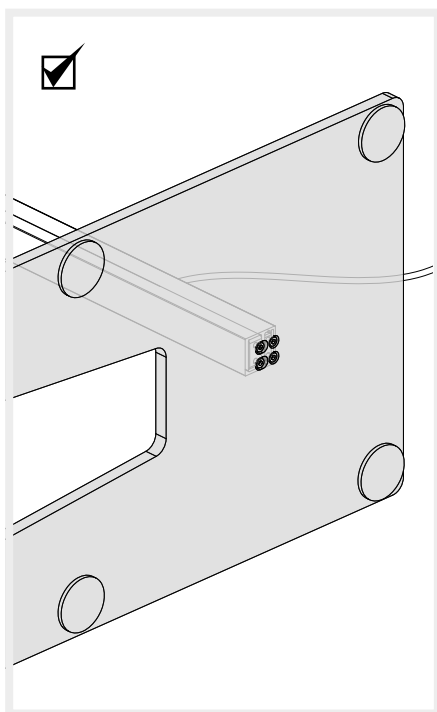


1

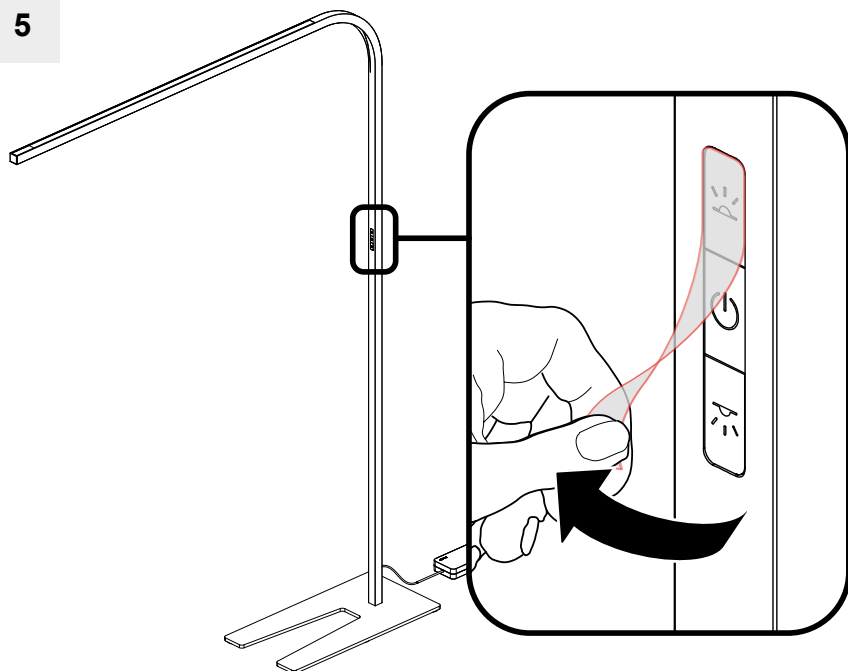


2

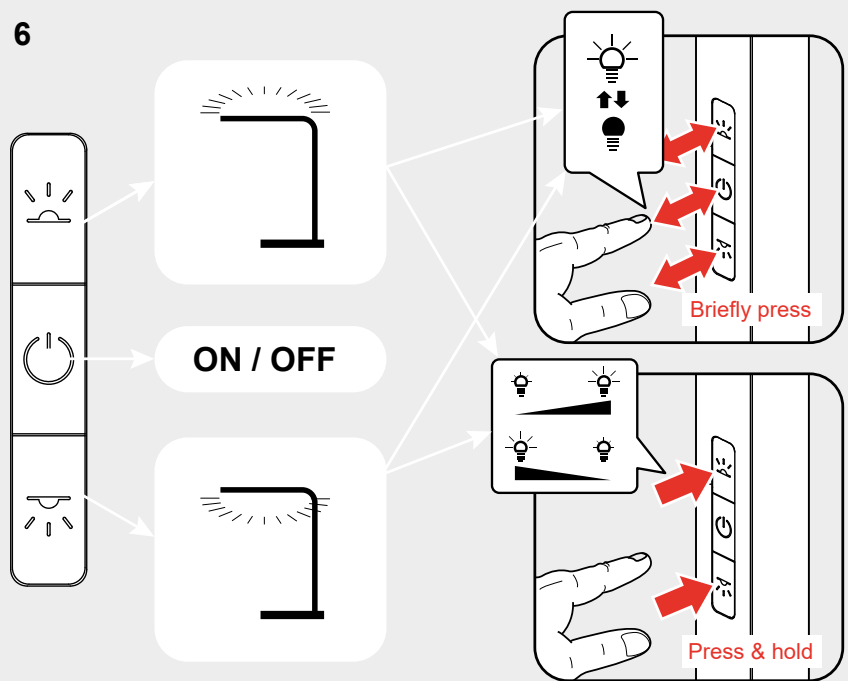




5

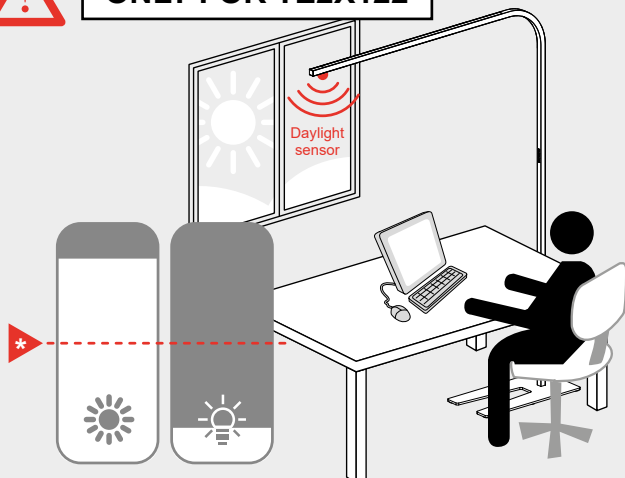


6

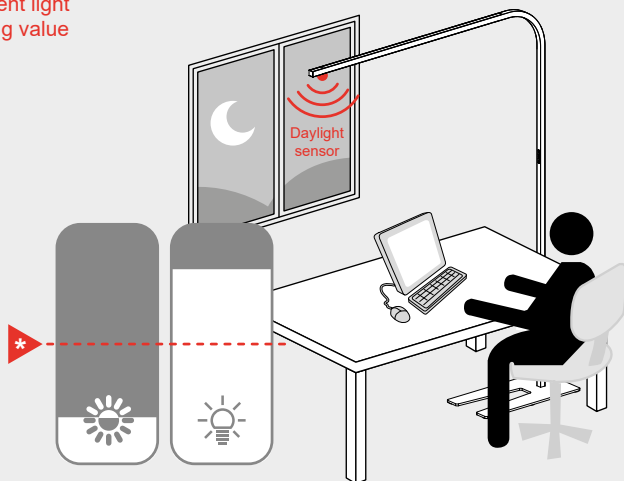




ONLY FOR TE2X122



* ambient light
setting value



* ambient light
setting value

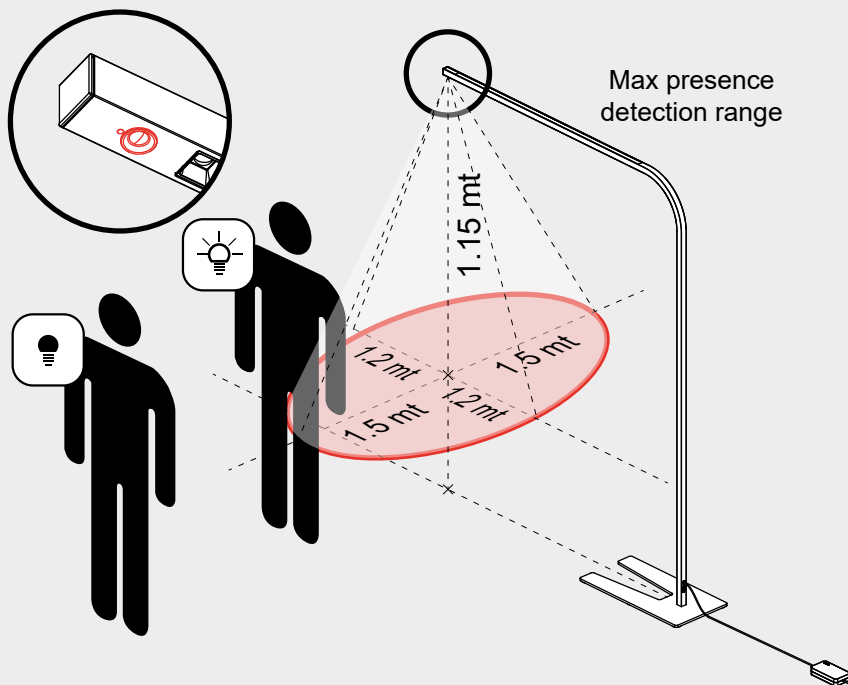
The luminaire is equipped with a daylight sensor and PIR sensor. The luminaire comes with a pre-set **ambient light setting** in memory.

At power on, direct and indirect lights switch on:

- if ambient light is higher than the preset value, luminaire's light emission slowly decreases,
- if ambient light is lower than the preset value, luminaire's light emission slowly increases.



ONLY FOR TE2X122



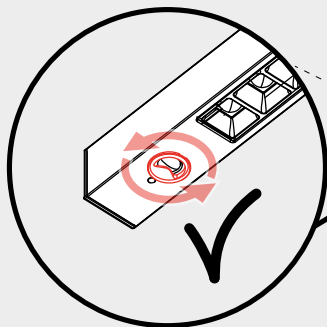
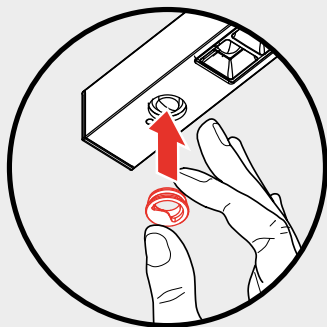
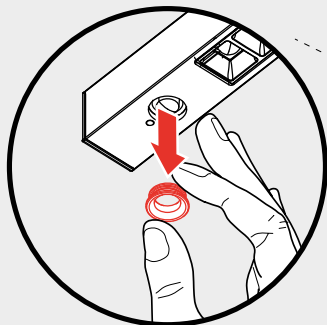
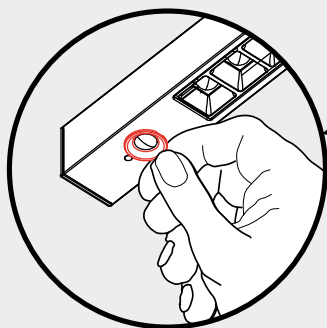
If the user leaves the lamp on and walks away, after 10 minutes, light emission lowers to 30%; then after a further 3 minutes, the lamp switches off.

When PIR sensor detects a presence, the lamp switches on at the preset value.

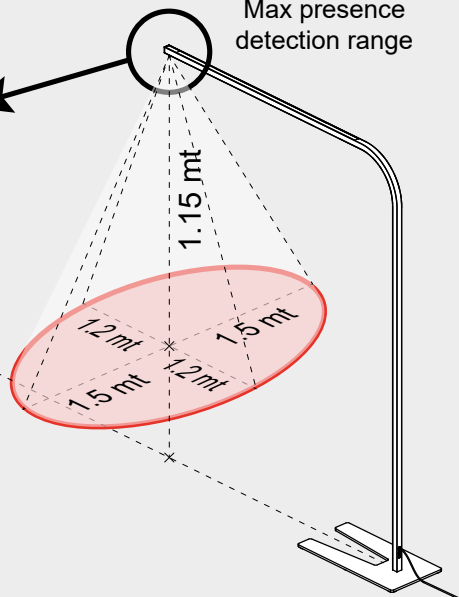


ONLY FOR TE2X122

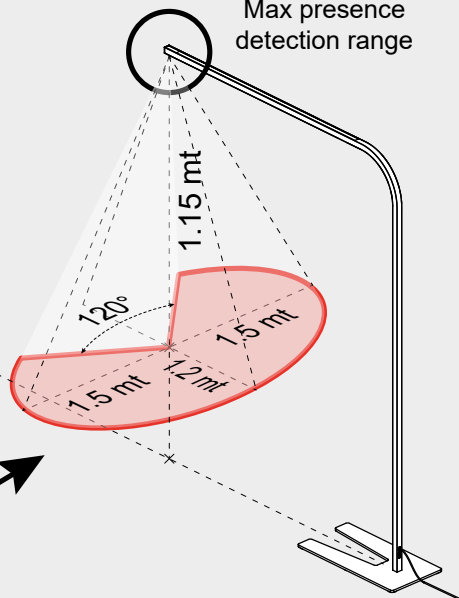
+



Max presence
detection range



Max presence
detection range





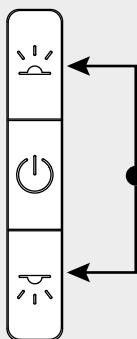
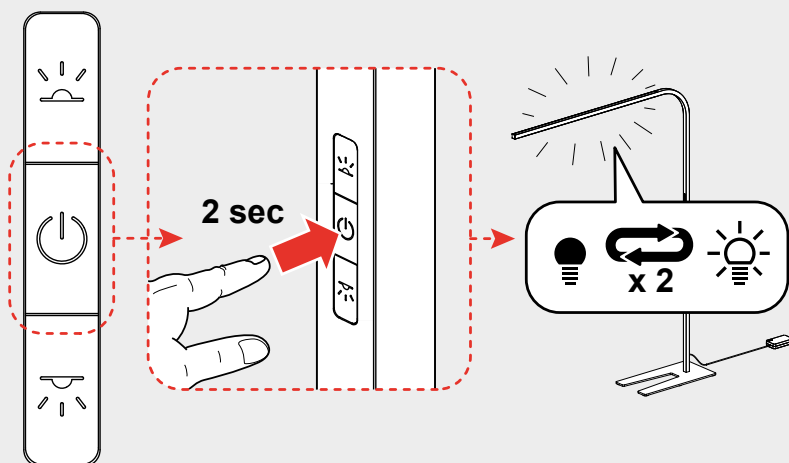
ONLY FOR TE2X122



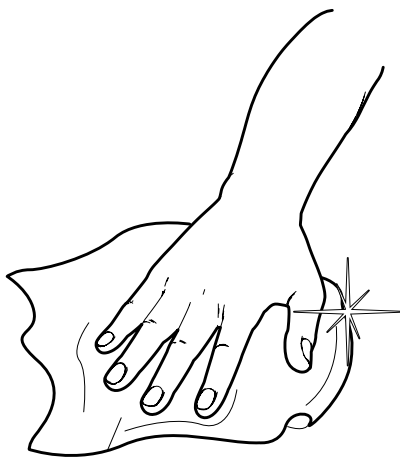
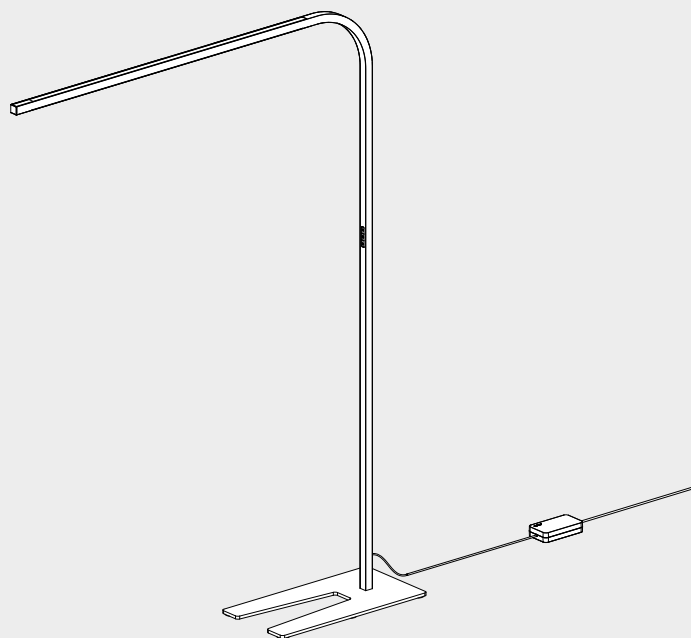
To change the pre-set ambient light value, the user must:

- set the desired light value by dimming (press & hold, **see fig.5**) the direct and/or indirect emission of the lamp,
- when the desired value is reached, hold on the central switch for 2 second; the lamp will flash 2 times.

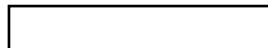
This meaning the lamp has saved the new ambient light value and from now on it will work as described so far.



If the user changes light emission's intensity manually operating on the switches (without changing the set value - as shown here above), daylight sensor and related automatic features are disabled, only PIR sensor keeps working.



Artemide®



Artemide

via Bergamo, 18
20006 Pregnana M.se (MI)
ITALIA

tel. +39 02 935 181
fax +39 02 935 90 254
fax +39 02 935 90 496

www.artemide.com

VAT IT00846890150

Artemide Inc.

250 Karin Lane
Hicksville, NY 11801

tel. 631 694 9292
Toll Free 1-877-Art-9111
Fax 631 694 9275

www.artemide.net

cod. Y513002016C